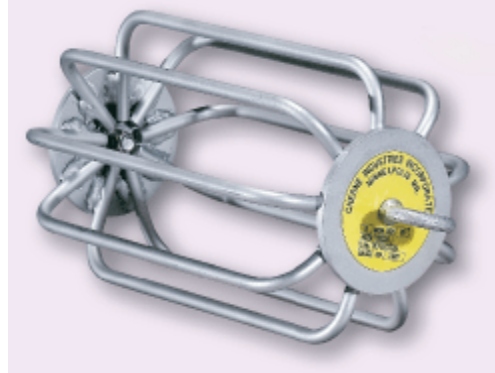


STEMAR EQUIPMENT & SUPPLY CO., INC.

Serving Underground Construction Since 1922

Fixed Steel Style Deflection Gauge:

- Durable, zinc-plated construction resists corrosion
- Conforms to mandrel sizing specifications—blade length is equal to or greater than the nominal pipe size
- Nine-arm design ensures testing accuracy
- Open design allows gravel and debris pass-through
- * Custom sizes available to 54"



Nominal Size	Pipe	5% Deflection	7.5% Deflection	Product Weight
Deflection Gauge Part Numbers				
6"	SDR 26	286008	286128	5 lbs
6"	SDR 35	286068	286188	5 lbs
8"	SDR 26	286018	286138	7 lbs
8"	SDR 35	286078	286198	7 lbs
10"	SDR 26	286028	286148	8 lbs
10"	SDR 35	286088	286208	8 lbs
12"	SDR 26	286038	286158	9 lbs
12"	SDR 35	286098	286218	9 lbs
15"	SDR 26	286048	286168	13.5 lbs
15"	SDR 35	286108	286228	13.5 lbs
18"	SDR 35	286118	286238	15 lbs
21"	SDR 35	286278	N/A	18 lbs

-----MANUFACTURING AND WHOLESALE CONSTRUCTION EQUIPMENT-----

SALE • RENTAL • SERVICE

353 SOUTH CENTRAL AVENUE • LOS ANGELES, CA 90013-1784

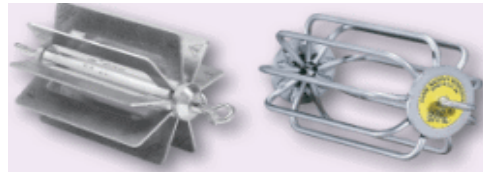
(213) 625-0185 • (800) 992-0100 • 24 HR. FAX (213) 625-0826

www.stemarinc.com

STEMAR EQUIPMENT & SUPPLY CO., INC.

Serving Underground Construction Since 1922

Deflection Gauges

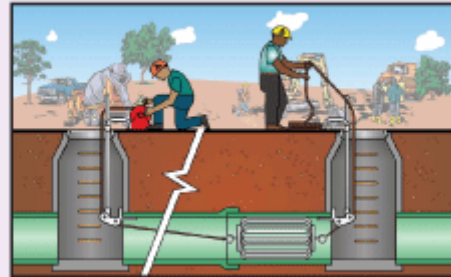


Deflection Gauges

Deflection Gauges (mandrels) are used to test flexible sewer pipe for out-of-roundness or deflection per ASTM specifications D3034 and F679. This testing ensures that flexible pipe has been properly bedded and backfilled (ASTM D2321) to give optimal performance.

Both steel and aluminum gauges utilize a nine arm design to ensure the pipe is tested accurately. This design also allows gravel and debris to easily pass through. Other gauges can get hung up – causing a deflection test to fail, even though the pipe is within tolerance. Sized to .01", both deflection gauge styles meet ASTM requirements.

Deflection Test



Nominal Size	Pipe	Average ID	Base ID*	5% Deflection	7.5% Deflection
ASTM Specification D3034 (4" - 15")					
4"	SDR 35	3.965	3.895	3.70	3.60
6"	SDR 2	5.764	5.612	5.33	5.19
6"	SDR 35	5.893	5.742	5.46	5.31
8"	SDR 26	7.715	7.488	7.11	6.93
8"	SDR 35	7.891	7.665	7.28	7.09
10"	SDR 26	9.644	9.342	8.87	8.64
10"	SDR 35	9.864	9.563	9.08	8.84
12"	SDR 26	11.480	11.102	10.55	10.27
12"	SDR 35	11.737	11.361	10.79	10.51
15"	SDR 26	14.053	13.575	12.90	12.56
15"	SDR 35	14.374	13.898	13.20	12.86

Nominal Size	Pipe	Average ID	Base ID*	5% Deflection	7.5% Deflection
ASTM Specification F679 (18" - 27")					
18"	SDR 26	17.177	16.586	15.76	15.34
18"	SDR 35	17.564	16.976	16.13	15.70
21"	SDR 26	20.249	19.545	18.57	18.08
21"	SDR 35	20.707	20.004	19.00	18.50
24"	SDR 26	23.296	22.480	21.36	20.80
24"	SDR 35	22.781	21.964	20.87	20.32
27"	SDR 26	25.674	24.744	23.51	22.89
27"	SDR 35	26.258	25.327	24.06	23.43
30"	SDR 26	29.306	28.763	27.32	26.61

*Base Inside Diameter (Base ID) - Allows for out of roundness and wall thickness tolerances as defined by ASTM standards.

-----MANUFACTURING AND WHOLESALE CONSTRUCTION EQUIPMENT-----

SALE • RENTAL • SERVICE

353 SOUTH CENTRAL AVENUE • LOS ANGELES, CA 90013-1784

(213) 625-0185 • (800) 992-0100 • 24 HR. FAX (213) 625-0826

www.stemarinc.com